



# SPR board meeting, RSNA 2014

Ines Boechat

Regional Societies



Founding Societies

**Mission Statement (2012): WFPI provides an international platform for pediatric radiology organizations united to address the challenges in global pediatric imaging training and the delivery of services.**



## STRATEGIC PRIORITIES

- Communication and collaboration between pediatric imaging practitioners, via their organizations
- Advocating for appropriate practices and resource allocation for children (including patient safety)
- Education
- Outreach and training in lower resource settings
- Research

Regional Societies



▶ Founding Societies

# Communication, collaboration

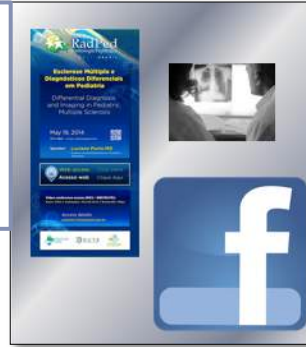


International governance

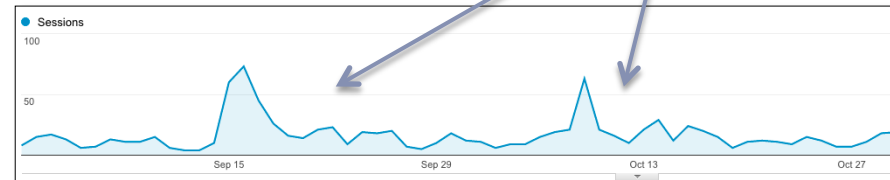


- 4000 + sessions
- 12000 pages visited
- 130 countries

730+ “likes”  
Useful medium for breaking news, new website posts, info sharing



4/year, onward society circulation = web traffic



Top 10 Facebook countries: Egypt, USA, India, Argentina, Brazil, Pakistan, Philippines, Algeria, Romania.  
Others of note: Saudi Arabia, Syria, Sudan, Bolivia, Bangladesh, Nepal, Sri Lanka, China

# Advocacy 1



WHO patient safety meetings Tanzania and Japan  
WHO pediatric imaging manual  
WHO-PAHO collaboration, Caribbean (tele-reading and training support)



Agreement to be signed?



African/Middle East regional committee, lead by Omolola Atalabi

## Regional Societies



## Founding Societies

# Advocacy: child Imaging safety

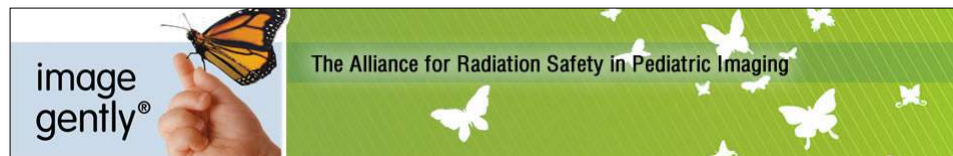


Aim: secure communication and collaboration between pediatric imaging practitioners **via organizations advocating for appropriate practices and resource allocation for children.**

How? Partnership with the Alliance for Radiation Safety in Pediatric Imaging and active participant in the Image Gently campaign, helping to build a framework for addressing international child imaging safety needs.

## Objectives

- 1/ support and enhance the IG Alliance and the work of other societies and agencies throughout the world in the goal of promoting radiation protection for children worldwide
- 2/ ensure WFPI's international reach extends to the Alliance and secure the Alliance's input into WFPI focus areas such as radiation safety and region-specific recommendations on radiation protection for children.



## Regional Societies



## Founding Societies

# Advocacy 3



WFUMB – partner a WFPI ultrasound group?



## Regional Societies

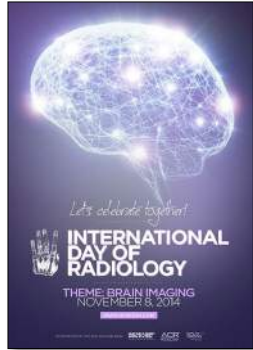


## Founding Societies

IDoR



This year: the brain



NEXT YEAR....



PEDIATRICS!

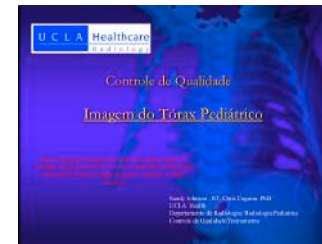
**ALL SYSTEMS GO!!!!**

Regional Societies



▶ Founding Societies

# Education - online & print



**Radiology of Childhood Abuse:** Nandish Shah, Eglal Shalaby Rana, Prof. Dorothy Bules

**Radiological progression of nodular infiltrates in HIV-infected South African children:** Pitcher RD, Lombard C, Cotton MF, Beningfield SJ, Zar HJ.

**Through the eye of the suprotemporal notch - searching for TB:** Tsapo Moseme and Savvas Andronikou, Department of Radiology, Faculty of Health Sciences, University of the Witwatersrand

**Pre-operative imaging in Epilepsy**

Sanjay P. Prabhu, MBBS, FRCR  
 Division of Neuroimaging  
 Children's Hospital Boston  
 Harvard Medical School

**Imaging HIV - and the problem of TB Coinfection in Children:** Savvas Andronikou, University of the Witwatersrand, South Africa

So now you know....



**CHILDHOOD TUBERCULOSIS**

BERNARD F. LAYA, MD, DO  
 Associate Professor of Radiology  
 St. Luke's Medical Center - Milwaukee City, Philadelphia

**WFPI Mini-Symposium "Outreach in the Developing World"**

32 articles  
 50+ authors  
 Issued May 2014

Click here



# Education: online videos & cases



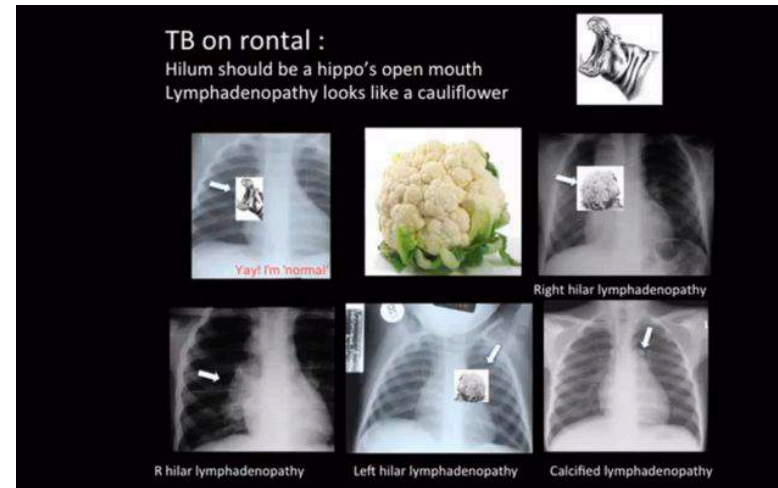
## Sanjay Prabhu – web master

- Organize existing content - (eg Savvas Snippets, Sonoview)
- Video creation guidelines & instructions
- YouTube channel for ease of access
- Investigate server storage, recording equipment



Nassissi Mezi  
Research Counselor

**Coming soon:** SPR-WFPI film, Pfizer-sponsored – theme: setting and advancing the research agenda in Africa



**Online cases:** contributors worldwide to show the diversity of pathology and how region specific knowledge may be important to interpret imaging studies.

### Regional Societies



### Founding Societies

# Outreach & training: onsite



# Have our first few years defined our niche?



WFPI

- ▶ Bring physicians together globally (a united network/platform)
- ▶ Use our collective strength to BOLT-ON (complement) existing initiatives with pediatric input. Partnerships at all levels must be the way forward. Existing partnerships (e.g. ACR, ESR) to not provide a barrier – on the contrary – and new ones have been/must be developed.

We complement, we do not compete.

THIS FITS OUR MISSION STATEMENT AND GOALS

Regional Societies



▶ Founding Societies

# Funding



- ▶ Traditional revenues for professional, non-profit societies: journal, congresses, courses
- ▶ Industry: access locked down?
- ▶ Nudged into the charity/NGO funding market



- ▶ highly competitive – the NGO sector has exploded
- ▶ calls for robust, dynamic, sustainable, high impact projects – preferably run by WFPI, in WFPI's name - to generate the volume and measurable outcomes required to attract funding (**“bolt-on” probably insufficient**)
- ▶ delivered with tight project management & robust over-arching governance – including teams to steer & implement fund raising strategy and donor applications

WFPI is an extension of its founding members, so a professional organization (not a charity). This severely curtails its chances of external funding success

## Regional Societies



## ▶ Founding Societies

# Strategic reflections



- ▶ 3 years down the line, do AfSPI, AOSPR, ESPR, SLARP and SPR still agree with WFPI's mission statement and goals?
- ▶ Are expectations of WFPI securing external funding realistic?
- ▶ If not, how could future costs be covered?
- ▶ If costs cannot be covered, how could WFPI be re-configured?

## Regional Societies



## ▶ Founding Societies

# THANK YOU

---



Regional Societies



▶ Founding Societies